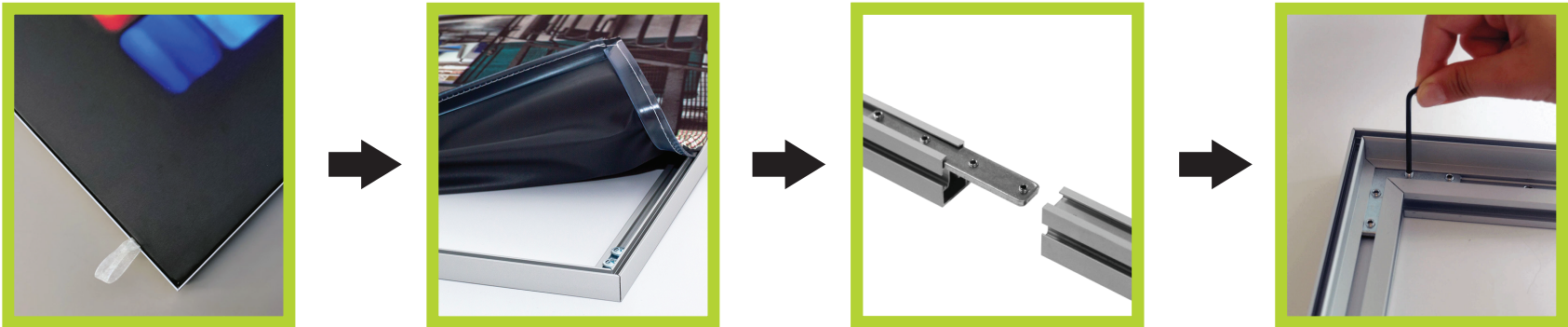




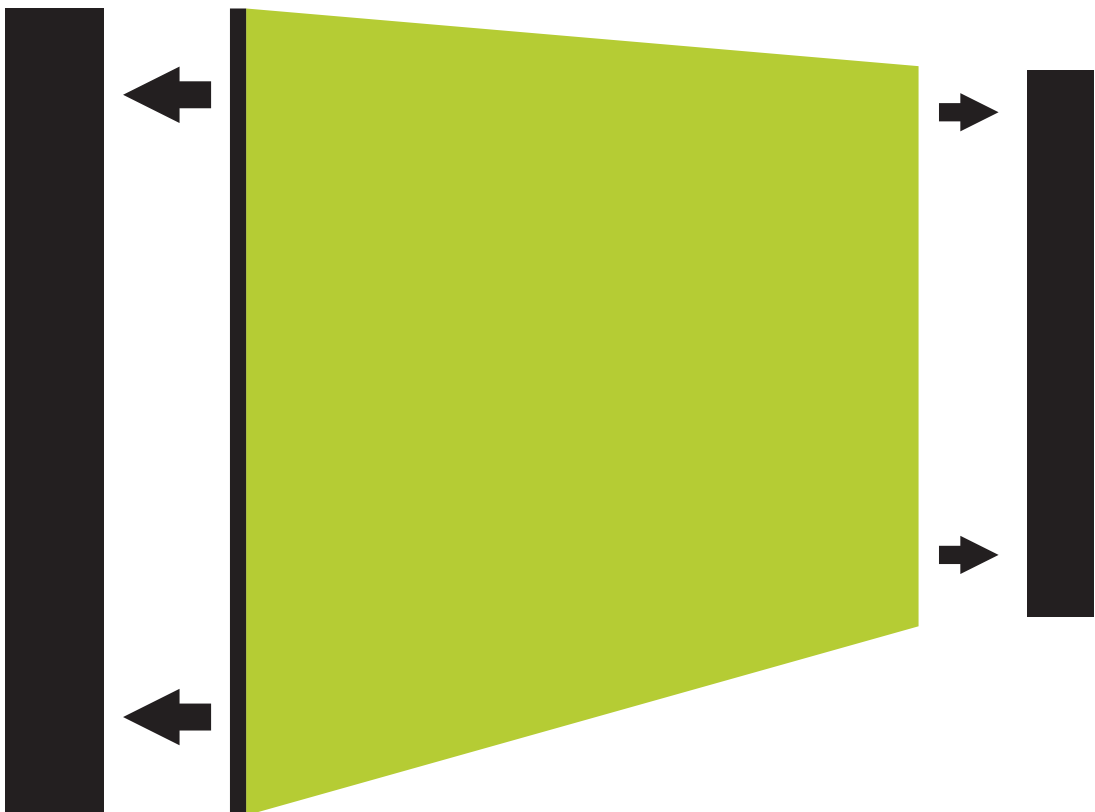
1.

START BY REMOVING THE PANELS AT EACH END



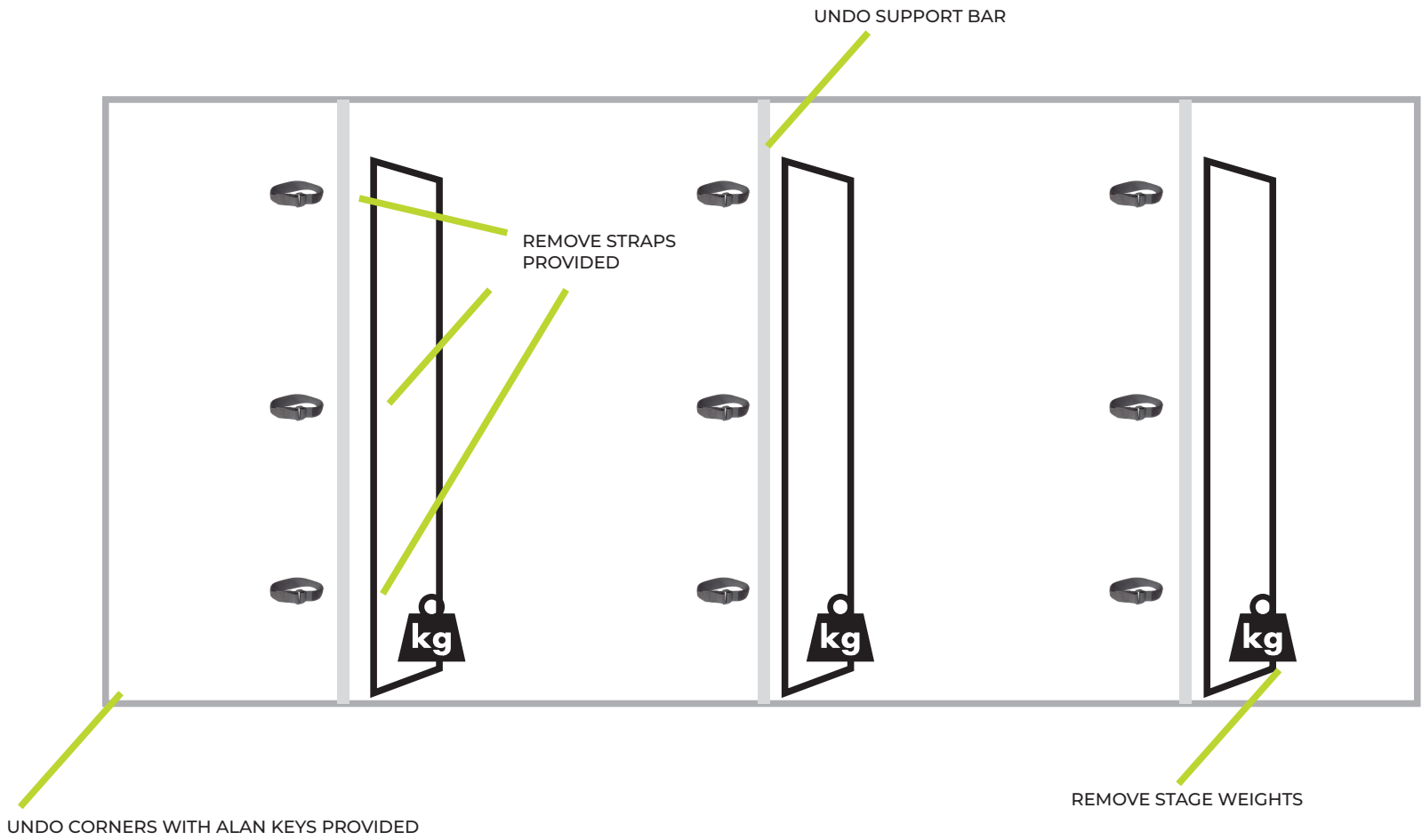
2.

REMOVE THE FABRIC, START FROM THE EDGES, YOU WILL SEE A SMALL TAB ON THE BOTTOM CORNER, PULL AND REMOVE THE FABRIC FROM THE FRAME, ROLL AND FOLD READY FOR THE NEXT EVENT.



3.

REMOVE STAGE WEIGHT, REMOVE STARPS, PLACE THE RETURN FRAME ON THE FLOOR IN A SAFE MANNER, REPEAT THAT ON ALL PARTS 1/4 DEPENDING ON THE WALL SIZE, NOW REMOVE THE SUPPORT BARS USING THE LARGER ALAN KEY PROVIDED, ONCE ALL ARE REMOVED, LAY THE FRAME DOWN AND START LOOSENING BUT NOT REMOVING THE SCREWS ON ONE SIDE OF THE CORNER BRACKET WITH THE SMALLER ALAN KEY PROVIDED, ONCE LOOSENED ON ONE SIDE ONLY, THE FRAMES WILL COME APART LEAVING THE CORNER BRACKET IN PLACE ON ONE OF THE FRAMES.



4.

USING THE STRAPS PROVIDED, PLACE ALL FRAME WORK ON THE FLOOR AND STRAP TOGETHER OR PLACE IN CARRY CASE IF PURCHASED.