

INSTRUCTIONS

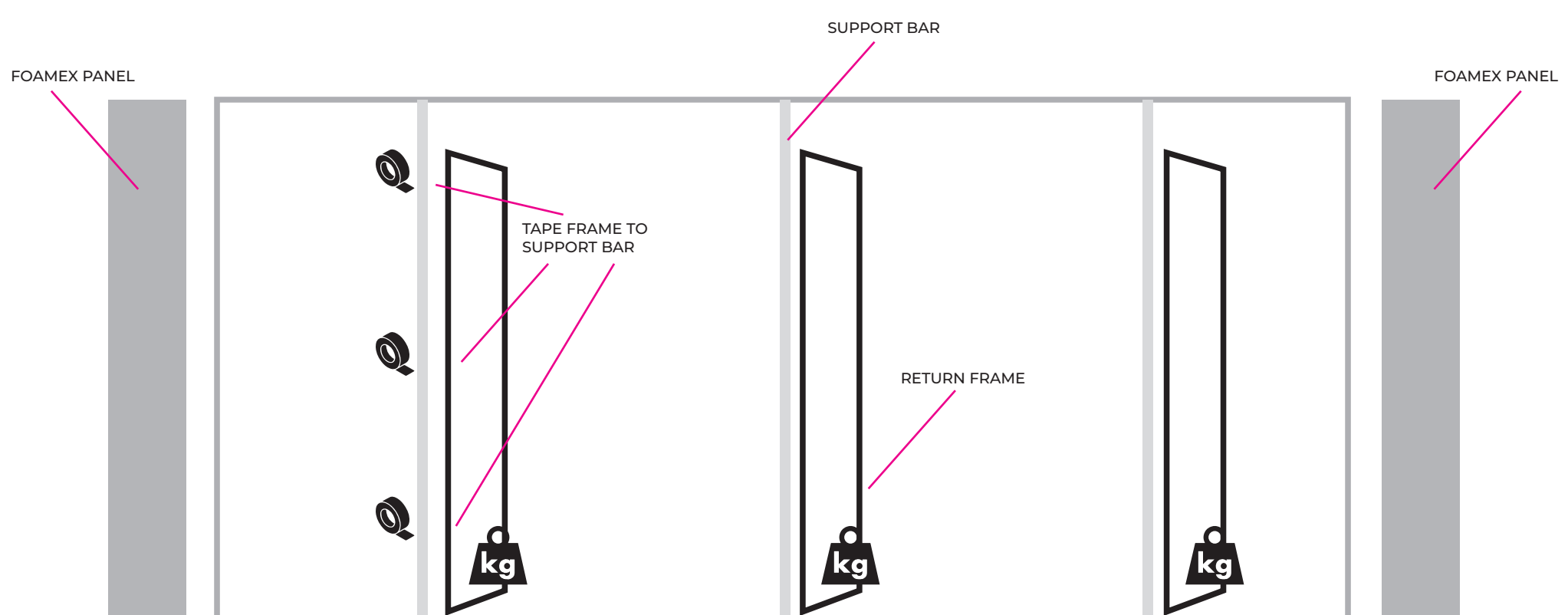
1. PLACE THE FRAME WORK ON THR FLOOR.

2. ATTACH THE FEET IF NOT ATTACHED TO BEGIN WITH.

3. USING THE ALAN KEY PROVIDED, SCREW THE CORNERS TOGETHER (GRUB SCREWS) AND STAND THE FRAME UP.

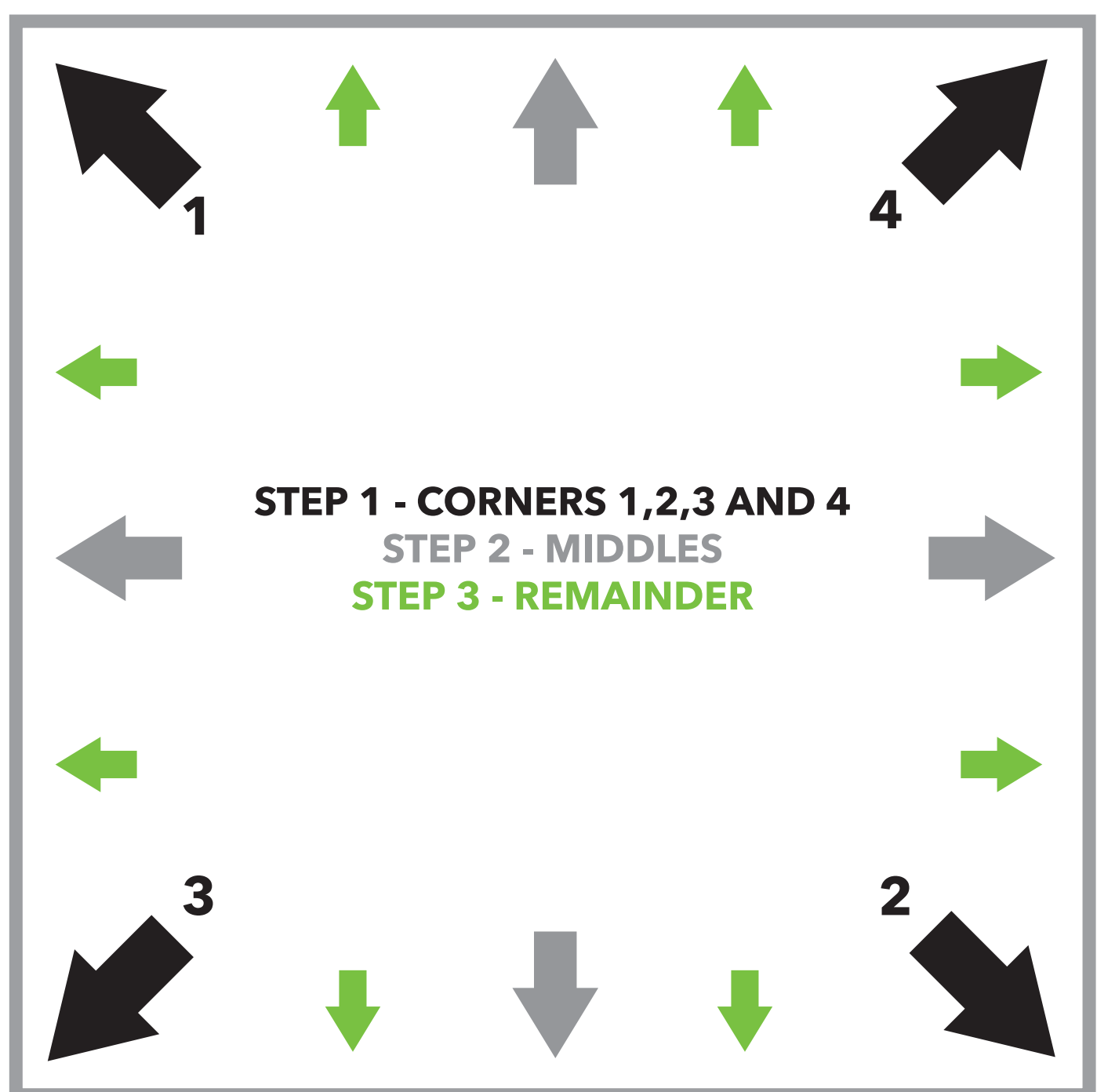
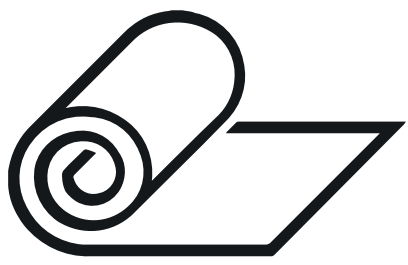


4. ADDING THE SUPPORT BARS, YOU WILL BE USING THE SECOND (LARGER) ALAN KEY TO INSTALL THESE TO THE FRAME, ONCE FIXED, TAKE ONE OF THE RETURN FRAMES AND ATTACHED ONE TO EACH SUPPORT BAR USING THE TAPE OR STRAPS PROVIDED THEN ADD ON A STAGE WEIGHT IF NEEDED.



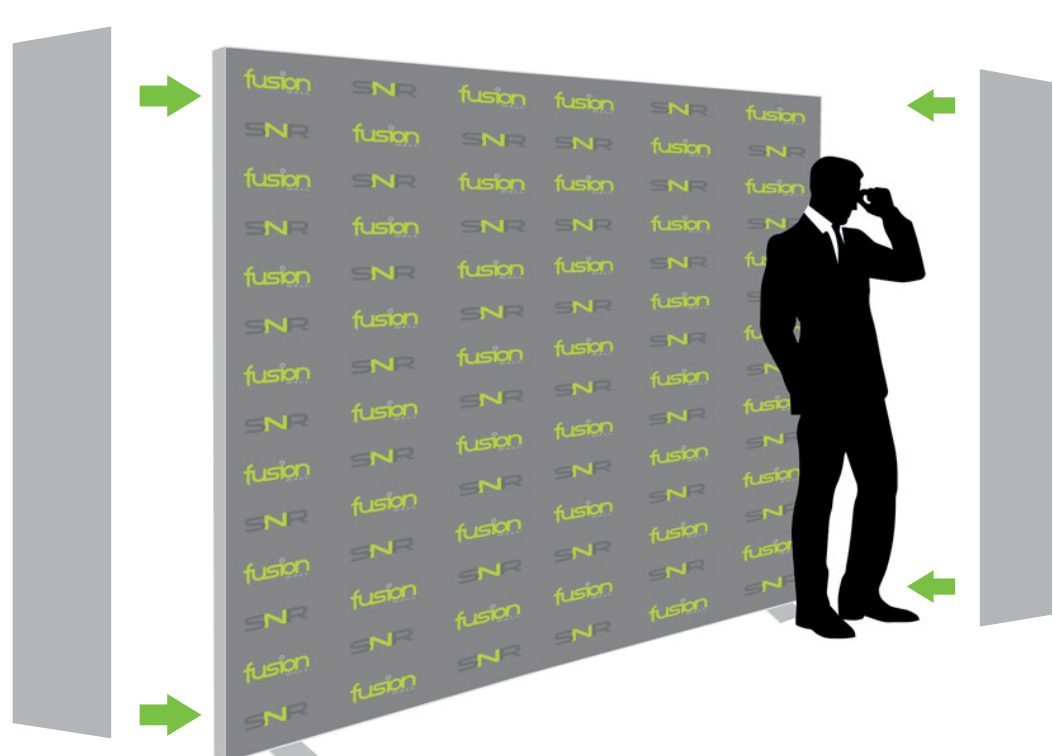
5. YOU WILL SEE A SILCONE EDGING BEHIND THE FABRIC , START FEEDING THE SILCONE INTO THE ALUMINUM SLOT, FOLLOW THE STEPS BELOW.

6. FABRIC INSTALL.



7. YOU MIGHT FIND A COUPLE OF LINES IN THE FABRIC, GIVE IT AN HOUR AND THEY WILL COME OUT, AS LONG AS YOU HAVE A GOOD TENSION, IF NOT REPEAT THE SAME PROCESS AS ABOVE AGAIN.

8. ADD YOUR RETURN PANELS ON WITH VELCRO.



YOUR DONE AND READY FOR PHOTO TIME.